

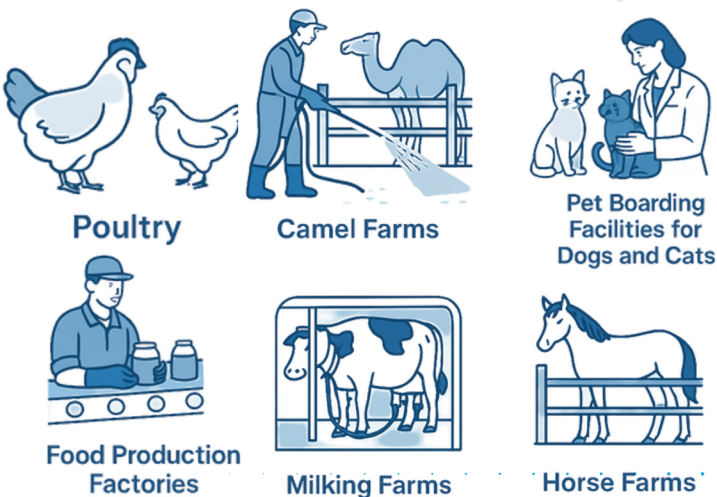
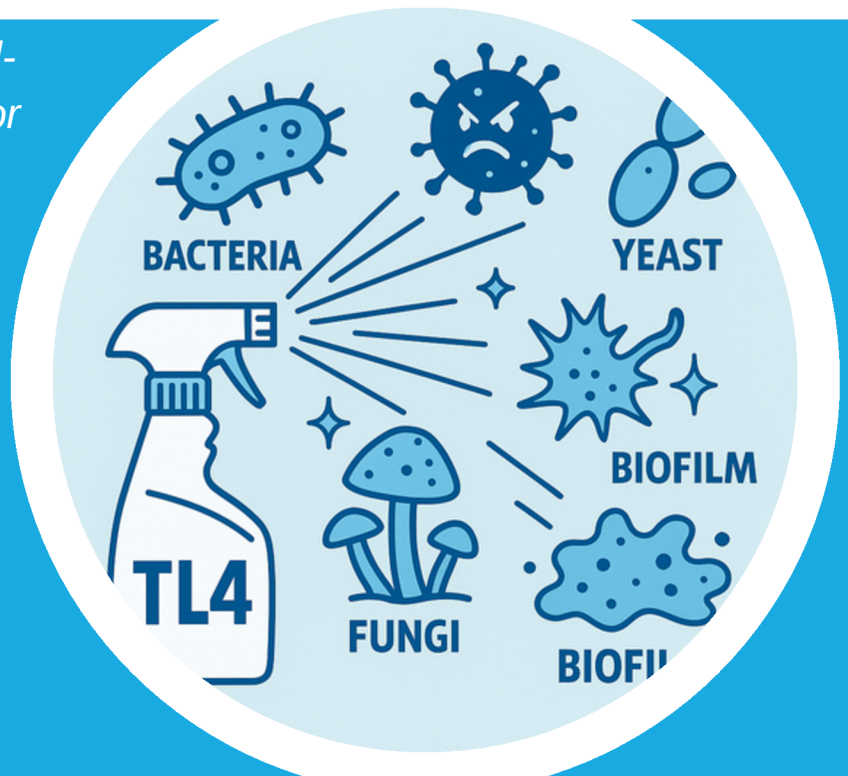
TL4

BROAD SPECTRUM DISINFECTANT TECHNICAL DATASHEET

KEY FEATURES:

- ✓ Dual Quat + Aldehyde Power
- ✓ Multi-Industry Application
- ✓ Veterinary-Grade Formulation

TL4 is a high-performance, broad-spectrum disinfectant designed for the effective control of bacteria, viruses, and fungi in animal environments and professional facilities. Formulated with a synergistic blend of quaternary ammonium compounds, glutaraldehyde, stabilizers, surfactants, and corrosion inhibitors, TL4 provides powerful disinfection while maintaining surface protection.



Effective against bacteria, viruses, fungi, yeast, and biofilm.

Targets pathogens such as Bordetella bronchiseptica, E. coli, Salmonella, parainfluenza virus, adenovirus, and more

+971 4 2675820

www.tclgcc.com

P.O. Box 94988
Dubai- UAE

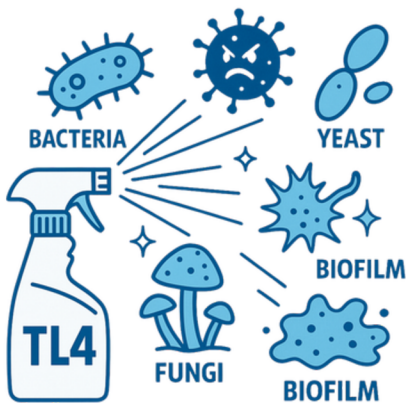
TL4

BROAD SPECTRUM DISINFECTANT

TECHNICAL DATASHEET

Applications: Where to Use TL4:

- Camel farms
- Cow farms / Dairy farms
- Horse farms / stables
- Poultry farms and hatcheries
- Falcon farms and bird care facilities
- Milking parlors and dairy processing areas
- Slaughterhouses and butcheries
- Food production and packaging factories
- Pet boarding facilities (dogs and cats)
- Veterinary clinics and hospitals



Manufacturer: TCL Detergents LLC

Address: Al Qusais Industrial Area 3, Dubai, UAE

P.O. Box: 94988 Dubai – UAE

Tel: +971 4 2675820

Emergency Contact: +971 55 4703828

Email: info@tclgcc.com

TL4

BROAD SPECTRUM DISINFECTANT

TECHNICAL DATASHEET



TL4 APPLICATION IN CAMEL FARMS

✓ Where to Use TL4 in Camel Facilities

Area	Application Purpose
Sand paddocks	Disinfect ground where camels lie, urinate, and defecate
Feeding and watering zones	Sanitize drinking troughs, feed bins, and shaded rest zones
Shelters and barns	Clean walls, gates, and sleeping areas
Camel trailers and transport areas	Control contamination and biohazards between farms
Camel body wash (diluted)	Used to bathe camels and reduce skin infections (like fungal/yeast-based dermatitis)

TL4

BROAD SPECTRUM DISINFECTANT

TECHNICAL DATASHEET



✓ How to Use TL4 in Camel Farms:

Purpose	Dilution	Method	Frequency
Sand disinfection	1:100 to 1:150	Spray sand thoroughly in shaded & contaminated zones	Every 2–3 days or after cleaning
Shelter & wall cleaning	1:200	Mop or spray on surfaces, allow to dry	Weekly or as needed
Feeding/drinking equipment	1:200	Soak or wipe with diluted TL4, rinse after 10 mins	Daily
Camel body bath (under user discretion)	1:300 to 1:400	Sponge, spray, or bathe camels using diluted solution	Weekly or when skin disease is present
Transport trailers	1:100	Wash or fog after each use	After every transport

Note:

Always apply TL4 on pre-cleaned surfaces for maximum effectiveness.
Let sand dry completely before allowing camels to rest or lie on it.

TL4

BROAD SPECTRUM DISINFECTANT

TECHNICAL DATASHEET



Special Case: Skin Disease & Sand Hygiene

customers observation and feedback

- Camels lying in contaminated sand develop fungal and bacterial skin infections (rash, hair loss, sores)
- Regular spraying of sand with diluted TL4 (1:100–1:150) has significantly reduced skin disease recurrence
- Bathing camels with very mild TL4 solution (1:300–1:400) has helped clear visible skin conditions

This indicates TL4 is effective against:

- Yeast and fungal infections (like *Malassezia* spp. or dermatophytes)
- Skin-borne bacteria like *Staphylococcus aureus* or *Corynebacterium*

✓ These benefits give **TL4** a major competitive advantage over basic disinfectants.

TL4

BROAD SPECTRUM DISINFECTANT

TECHNICAL DATASHEET



! What to Avoid:

Situation	Recommendation
Spraying near eyes or mouth	Avoid direct spraying on the face or mucous membranes
Using undiluted TL4 on skin	Always dilute properly — over-concentration can cause irritation
Over-wetting sand without drying	Allow treated sand to dry before camels rest on it
Mixing TL4 with other chemicals	Never mix with acids, chlorine, or other disinfectants

TL4

BROAD SPECTRUM DISINFECTANT

TECHNICAL DATASHEET




Safety Guidelines:

- ✓ Always wear gloves and safety glasses when handling the concentrate
- ✓ Use masks if spraying in closed barns or enclosed trailers
- ✓ Do not allow camels access to freshly sprayed sand until it's dry
- ✓ Keep TL4 concentrate away from children and feed storage
- ✓ In case of eye contact or ingestion, rinse thoroughly and seek veterinary or medical help

Support & Guidance:

For more details, sector-specific dilution charts, or implementation plans, visit:

 www.TCLgcc.com/TL4

 Or contact the TCL Customer Care Team to request the full Technical Data Sheet for dairy farm operations.

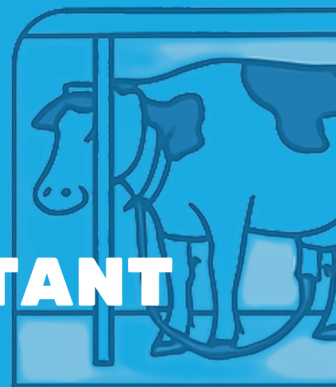
 To find TCL contact information in your country, visit:

 www.TCLgcc.com/contact

TL4

BROAD SPECTRUM DISINFECTANT

TECHNICAL DATASHEET



TL4 APPLICATION IN DAIRY FARMS

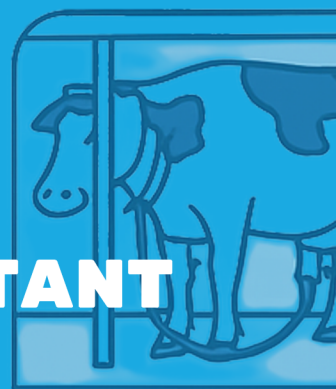
✓ Where to Use TL4 in Dairy Facilities:

Area	Application Purpose
Barn floors & walkways	General sanitation to reduce bacterial load and odor
Animal holding pens & gates	Disinfect areas of high animal contact
Milking parlors (floors & non-food-contact equipment)	Control pathogens between milking sessions
External surfaces of milking equipment	Clean and disinfect outer housings of milking machines
Footbaths	Prevent hoof diseases such as digital dermatitis
Drain lines & waste areas	Control odor and microbial buildup
Storage rooms, feeding stations, and corridors	Maintain hygiene and reduce cross-contamination risk

TL4

BROAD SPECTRUM DISINFECTANT

TECHNICAL DATASHEET



✓ How to Use TL4 in Dairy Farms:

Purpose	Dilution	Application Method	Contact Time
General daily cleaning	1:200	Mop or spray on floors and surfaces	10 minutes
Infection control / high-risk disinfection	1:100	Spray on high-risk zones (calving pens, footbath area)	10–15 minutes
Footbath solution	1:100–1:150	Fill troughs with diluted solution	Refresh daily or after 150 cow passes
Equipment exterior (non-contact)	1:200	Wipe or spray	10 minutes, then rinse if needed

Instructions:

Pre-clean surfaces to remove manure, milk residue, and organic matter.

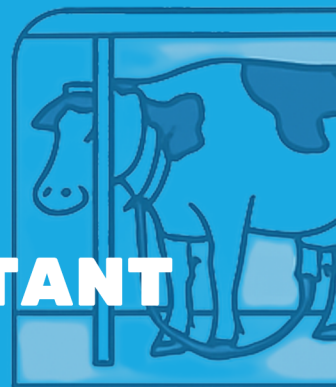
Apply TL4 evenly with sprayer, foamer, or mop.

Allow adequate contact time before rinsing or reuse.

TL4

BROAD SPECTRUM DISINFECTANT

TECHNICAL DATASHEET



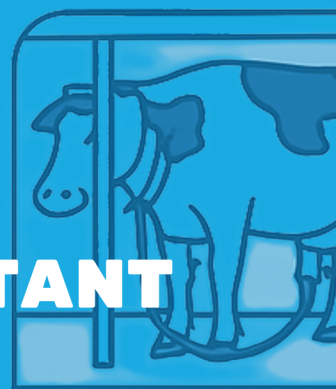
⚠ What to Avoid:

Risk	Recommendation
Using on food-contact surfaces without rinsing	Always rinse thoroughly if TL4 is applied to surfaces that touch milk or milk lines
Using inside milk pipes or direct-contact zones	TL4 is not designed for internal CIP systems — use dairy-approved CIP cleaners
Mixing with other chemicals	Never mix TL4 with acids, chlorinated products, or strong oxidizers
Inadequate dilution	Always follow dilution chart — under-dilution may harm animals or corrode surfaces
Incomplete rinsing	In milking areas, always rinse thoroughly and allow drying before resuming operations

TL4

BROAD SPECTRUM DISINFECTANT

TECHNICAL DATASHEET




Safety Precautions:

- ✓ Use gloves and goggles when handling the concentrate.
- ✓ Ensure adequate ventilation when spraying in enclosed areas.
- ✓ Do not allow animals to enter treated areas until surfaces are dry.
- ✓ In case of accidental eye contact,
rinse immediately with clean water for 15 minutes.
- ✓ Avoid inhalation of mist — use masks during fogging or large-area spraying.

Support & Guidance:

For more details, sector-specific dilution charts, or implementation plans, visit:

 www.TCLgcc.com/TL4

 Or contact the TCL Customer Care Team to request the full Technical Data Sheet for dairy farm operations.

 To find TCL contact information in your country, visit:

 www.TCLgcc.com/contact

TL4



BROAD SPECTRUM DISINFECTANT TECHNICAL DATASHEET

TL4 APPLICATION IN POULTRY FARMS

✓ WHERE TO USE TL4 IN POULTRY FACILITIES AREA

Area	Purpose
Broiler and layer housing floors	Disinfect surfaces and litter areas between batches
Cages and perches	Prevent bacterial and fungal contamination
Feeder and drinker systems (external)	Eliminate biofilm and surface-borne microbes
Egg incubators & hatcheries	Control fungal, bacterial, and viral growth
Delivery crates and transport containers	Sanitize between flocks
Foot dips and personnel entry points	Prevent cross-contamination from shoes and equipment

TL4



BROAD SPECTRUM DISINFECTANT

TECHNICAL DATASHEET

✓ HOW TO USE TL4 IN POULTRY OPERATIONS

Purpose	Dilution	Method	Frequency
General housing disinfection	1:200	Spray or foam on walls, floors, cages	Between flocks or weekly
Outbreak control (Salmonella, avian influenza)	1:100	High-level fogging or spraying	Immediate upon detection
Egg incubators	1:200–1:300	Wipe or mist in empty incubator	After every cycle (ensure dry before use)
Transport crates	1:100	Wash and disinfect after every use	Per load
Footbath solution	1:100–1:150	Maintain clean solution at entry points	Change daily or after 50 crossings

⚠ Always clean organic material first. TL4 is most effective on clean, dry surfaces.

TL4



BROAD SPECTRUM DISINFECTANT

TECHNICAL DATASHEET

! WHAT TO AVOID IN POULTRY FARMS

- Do not use TL4 inside live incubators or on eggs directly
- Avoid spraying directly on birds or near feed/water intake
- Never mix TL4 with acidic or chlorinated chemicals
- Ensure proper ventilation during fogging

SAFETY GUIDELINES FOR POULTRY FARMS

Wear gloves and mask when applying concentrate or spraying in closed environments

Allow surfaces to dry before introducing birds


Rinse feeders or drinkers if in contact with TL4

Keep out of reach of birds when concentrated

Support & Guidance:

For more details, sector-specific dilution charts, or implementation plans, visit:

 www.TCLgcc.com/TL4

 Or contact the TCL Customer Care Team to request the full Technical Data Sheet for dairy farm operations.

 To find TCL contact information in your country, visit:

 www.TCLgcc.com/contact

TL4

BROAD SPECTRUM DISINFECTANT TECHNICAL DATASHEET



TL4 APPLICATION IN FALCON FARMS

✓ WHERE TO USE TL4 IN FALCON FACILITIES

Area	Purpose
Perches and stands	Eliminate fungus, bacteria from claws and feet contact
Cage floors and walls	Disinfect feces and feather debris contamination
Feeding trays and water dishes	Control surface-borne infections
Transport carriers and gloves	Sanitize regularly for hygiene
Air-conditioned indoor falcon rooms	Maintain sterile conditions and air quality with fogging (in absence of birds)

TL4

BROAD SPECTRUM DISINFECTANT

TECHNICAL DATASHEET



✓ HOW TO USE TL4 IN FALCON ENVIRONMENTS

Purpose	Dilution	Method	Frequency
Perch disinfection	1:200– 1:300	Spray or wipe, allow drying	Daily or after each use
Cage sanitation	1:200	Mop or spray floor and walls	Weekly or bi-weekly
Feeding accessories	1:300	Wipe and rinse after 10 mins	After each feeding session
Gloves and carriers	1:150	Spray and air dry	Daily
Fogging indoor falcon rooms (bird-free)	1:200	Use ULV or cold fogger	Weekly

TL4

BROAD SPECTRUM DISINFECTANT

TECHNICAL DATASHEET



WHAT TO AVOID IN FALCON FACILITIES

- Never apply TL4 directly on the falcon's body or feathers
- Do not leave wet surfaces accessible to birds — always dry before re-entry
- Rinse all feeding items thoroughly
- Avoid strong misting while birds are present


SAFETY GUIDELINES FOR FALCON FARMS USE

- Use eye and respiratory protection when fogging or spraying indoors
- Allow proper air exchange post-application
- Do not store TL4 near feed or supplements
- Train staff to respect drying times before reintroducing birds

Support & Guidance:

For more details, sector-specific dilution charts, or implementation plans, visit:

 www.TCLgcc.com/TL4

 Or contact the TCL Customer Care Team to request the full Technical Data Sheet for dairy farm operations.

 To find TCL contact information in your country, visit:

 www.TCLgcc.com/contact

TL4

BROAD SPECTRUM DISINFECTANT

TECHNICAL DATASHEET



TL4 APPLICATION IN SLAUGHTERHOUSES & BUTCHERY FACILITIES

✓ WHERE TO USE TL4 IN SLAUGHTERHOUSES

Area	Purpose
Slaughter floors	Sanitize blood and animal waste residue
Butchering and cutting tables	Eliminate microbial contamination from carcass handling
Walls and drain channels	Prevent buildup of bacteria, fungi, and biofilm
Hooks, rails, and conveyors	Disinfect contact points where carcasses are hung or moved
Cold storage rooms (non-contact surfaces)	Control airborne and surface pathogens
Personnel entry points and equipment	Sanitize boots, gloves, tools, and aprons
Animal holding pens	Reduce disease transmission from live animals pre-slaughter

TL4

BROAD SPECTRUM DISINFECTANT

TECHNICAL DATASHEET



✓ HOW TO USE TL4 IN SLAUGHTERHOUSES

Purpose	Dilution	Application Method	Contact Time
General disinfection (floors, drains, walls)	1:200	High-pressure sprayer or foam applicator	10–15 minutes
Cutting and processing zones (non-food-contact)	1:100	Spray, allow contact, then rinse thoroughly	10 minutes
Food-contact equipment (only if rinsed)	1:100–1:150	Wipe or spray, rinse 100% with potable water	10 minutes
Boot & equipment dips	1:100	Maintain in designated trays at entry points	Replace daily
Animal holding pens	1:100–1:150	Spray or mop after each batch of animals	10 minutes

TL4

BROAD SPECTRUM DISINFECTANT

TECHNICAL DATASHEET



! WHAT TO AVOID IN SLAUGHTERHOUSES

Risk	Recommendation
Leaving TL4 on food-contact surfaces	Must be rinsed completely with potable water
Using around open meat or carcasses	Apply only after cleaning, before or after production hours
Inadequate dilution	Always follow dilution instructions; overconcentration may damage stainless or cause irritation
Mixing TL4 with acidic cleaners or bleach	Dangerous and chemically incompatible



TL4

BROAD SPECTRUM DISINFECTANT

TECHNICAL DATASHEET


SAFETY GUIDELINES

- ✓ Wear full PPE: gloves, goggles, mask when handling TL4 concentrate
- ✓ Ensure proper ventilation during use in cold rooms or confined zones
- ✓ Keep TL4 containers away from meat storage or food processing zones
- ✓ In case of accidental contact with eyes or ingestion, rinse and seek medical help
- ✓ Train cleaning crews on proper dilution and rinsing protocol

Support & Guidance:

For more details, sector-specific dilution charts, or implementation plans, visit:

 www.TCLgcc.com/TL4

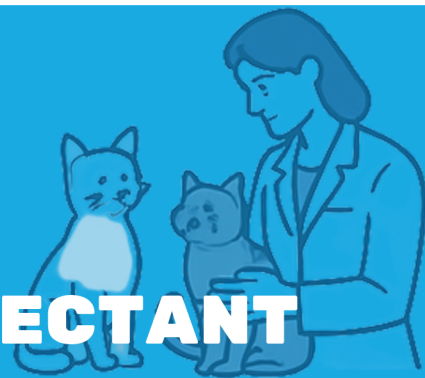
 Or contact the TCL Customer Care Team to request the full Technical Data Sheet for dairy farm operations.

 To find TCL contact information in your country, visit:

 www.TCLgcc.com/contact

TL4

BROAD SPECTRUM DISINFECTANT TECHNICAL DATASHEET



TL4 APPLICATION IN PET BOARDING FACILITIES & VETERINARY CLINICS

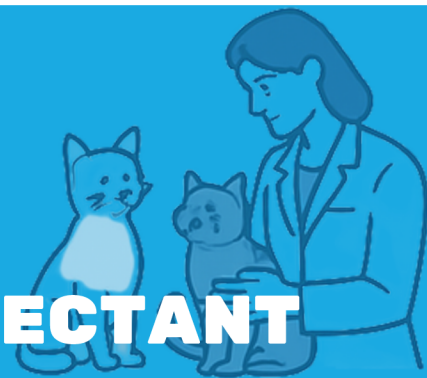
WHERE TO USE TL4 IN THESE ENVIRONMENTS

Area	Purpose
Kennels and cages	Sanitize sleeping/resting areas to prevent spread of infections
Examination tables and surgical prep areas	Control bacteria and viruses between patient visits
Floors and walkways	Eliminate urine/feces contamination and reduce odor
Grooming and treatment stations	Disinfect tools and work surfaces
Isolation rooms & quarantine zones	High-level disinfection for outbreak control (e.g. kennel cough, parvovirus)
Feeding areas (non-contact)	Maintain clean conditions around feeding zones
Pet transport crates and carriers	Disinfect between uses to prevent cross-contamination

TL4

BROAD SPECTRUM DISINFECTANT

TECHNICAL DATASHEET



✓ HOW TO USE TL4 IN PET CLINICS & BOARDING CENTERS

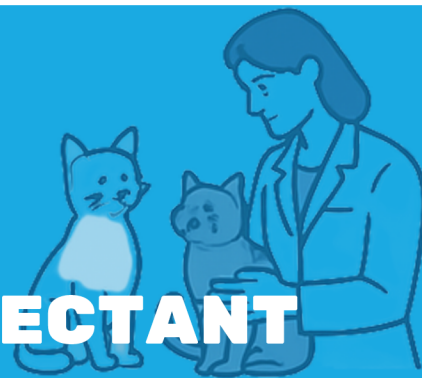
Purpose	Dilution	Application Method	Frequency
Daily kennel/cage cleaning	1:200	Spray or mop on floors, walls, bedding zones	Daily
Outbreak control (kennel cough, parvo)	1:100	Deep clean infected areas or isolation rooms	After every infected case
Surgical or exam table disinfection	1:150–1:200	Wipe or spray and allow to dry	After every patient
Transport crates and carriers	1:100	Spray or wipe interior and let air dry	After each use
Grooming table/tools disinfection	1:200	Spray or wipe tools, allow drying	After each session

🧴 Always apply TL4 on pre-cleaned surfaces for best results. Let treated surfaces dry fully before allowing animal contact.

TL4

BROAD SPECTRUM DISINFECTANT

TECHNICAL DATASHEET



⚠️ WHAT TO AVOID IN PET BOARDING OR VETERINARY USE

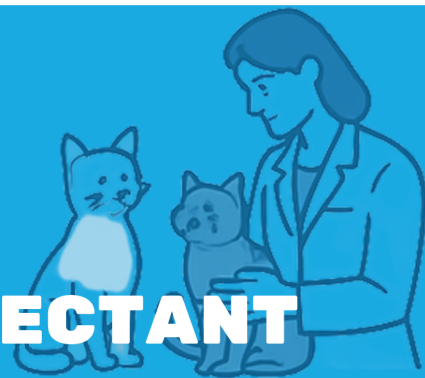
Risk	Recommendation
Direct use on pets' skin or fur	TL4 is not intended for direct application on animals
Wet kennels or wet bedding	Let surfaces dry fully before reintroducing pets
Leaving residue in food bowls	Rinse all food/water contact surfaces thoroughly
Over-concentrated solution	Always follow dilution ratios to prevent irritation or odor



TL4

BROAD SPECTRUM DISINFECTANT

TECHNICAL DATASHEET




SAFETY GUIDELINES

- ✓ Use gloves and eye protection when handling TL4 concentrate
- ✓ Apply in well-ventilated areas or use fans to dry quickly
- ✓ Keep pets out of the treated area until surfaces are completely dry
- ✓ Rinse hands after using the diluted solution, especially before handling animals
- ✓ In case of eye or skin contact, rinse thoroughly with clean water

Support & Guidance:

For more details, sector-specific dilution charts, or implementation plans, visit:

 www.TCLgcc.com/TL4

 Or contact the TCL Customer Care Team to request the full Technical Data Sheet for dairy farm operations.

 To find TCL contact information in your country, visit:

 www.TCLgcc.com/contact